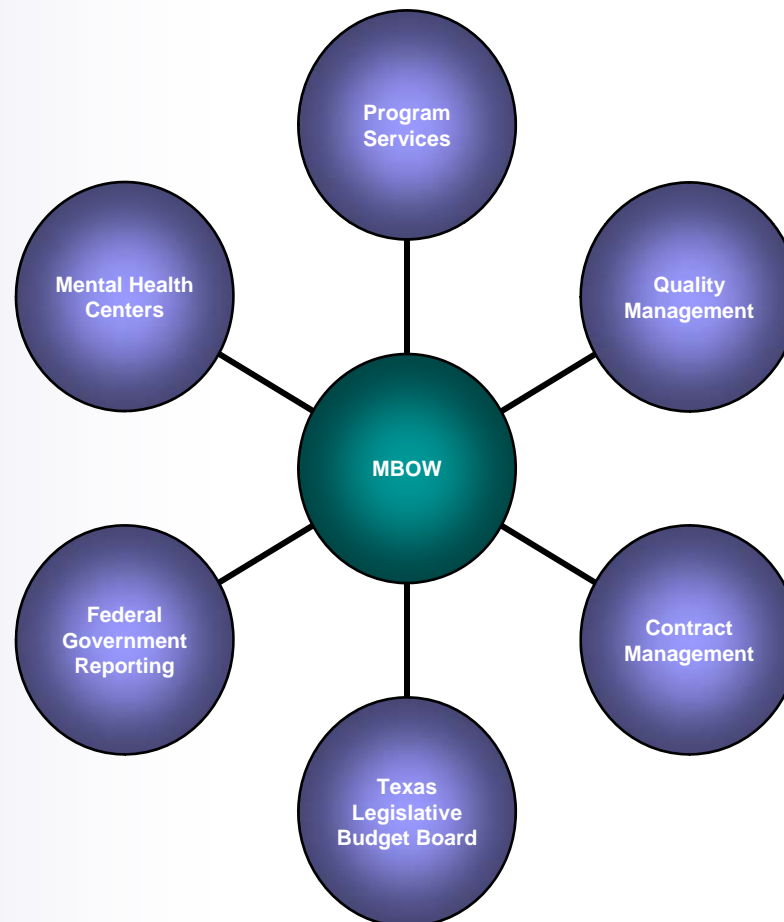


Mental Health and Substance Abuse Division

Data Collaboratives

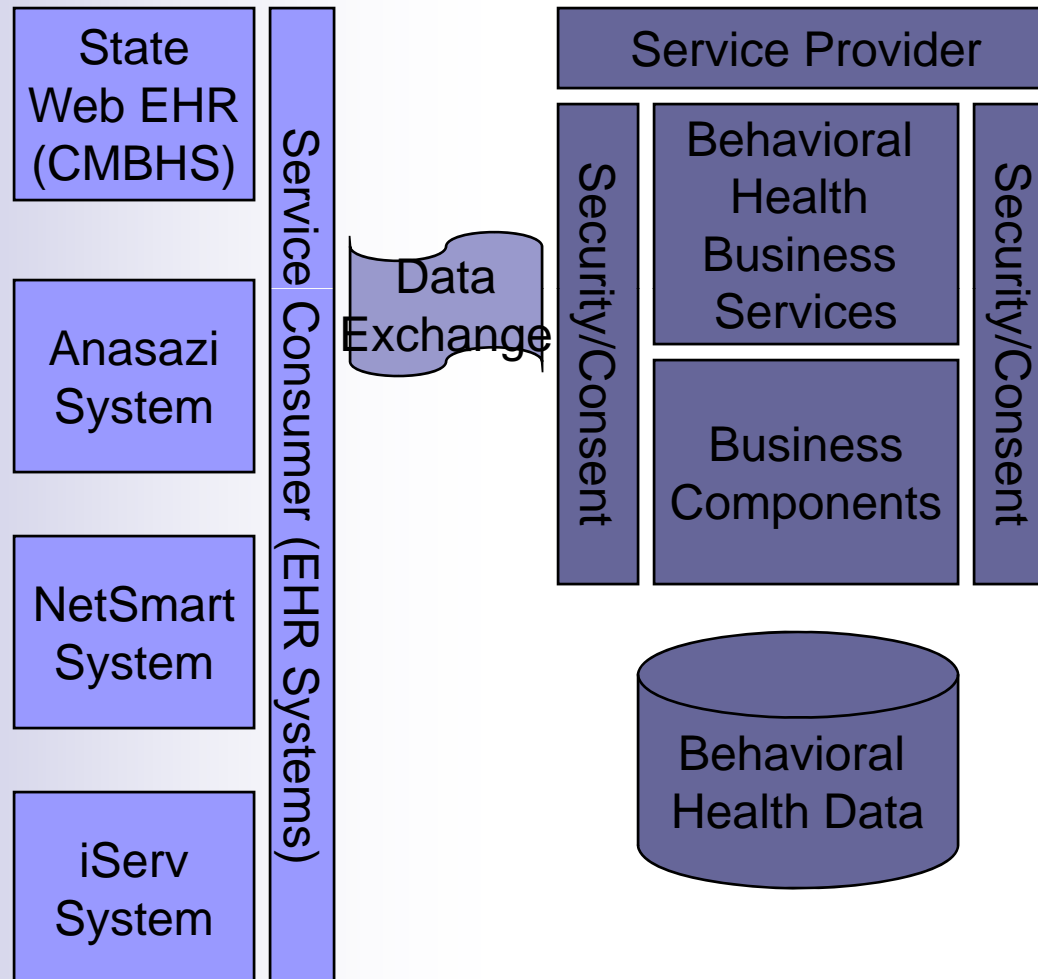
MBOW Data Audiences



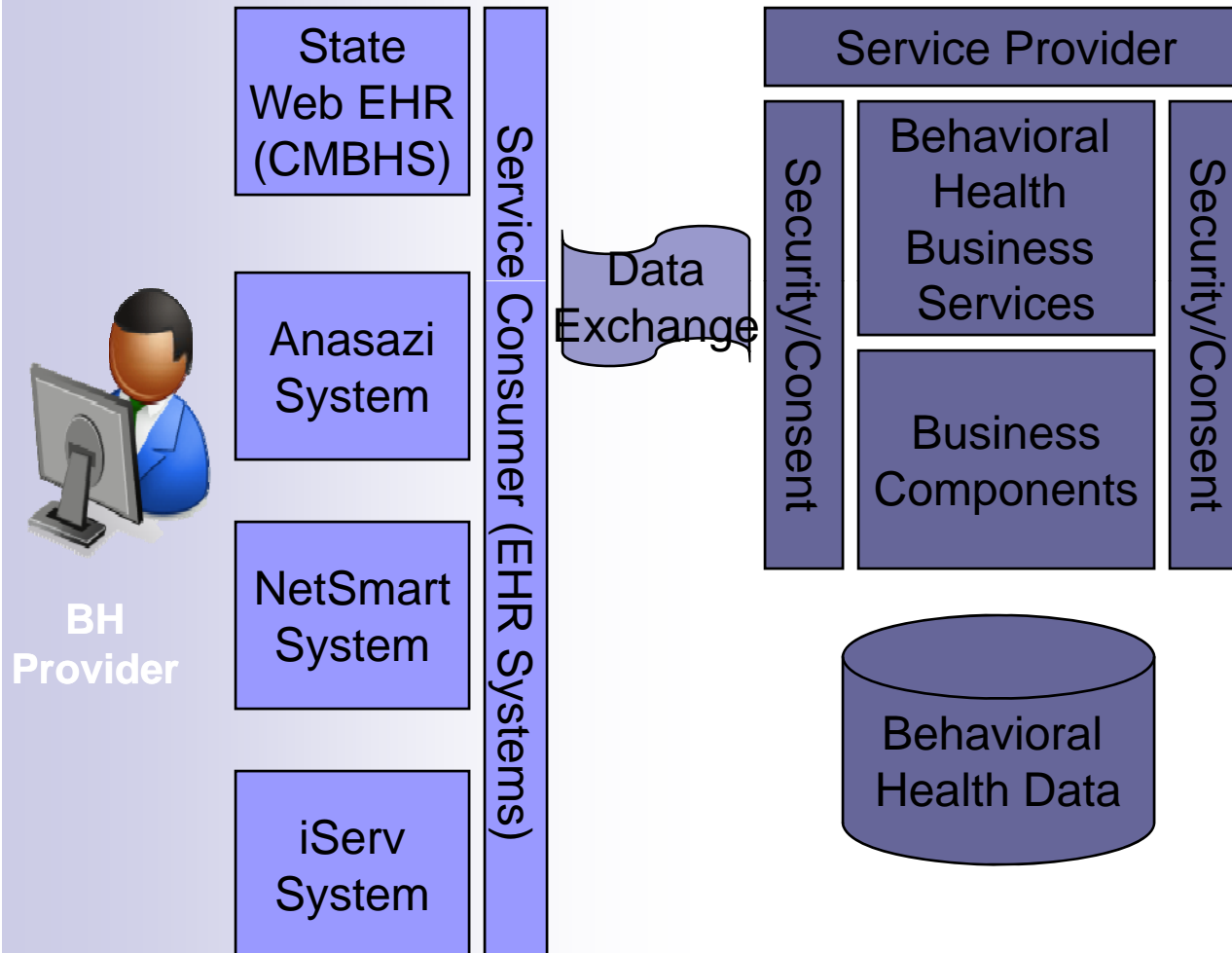
Towards Interoperability with the LMHAs

- Three major vendors (Anasazi, NetSmart, IServ)
- Several independent systems
- All on different database platforms
- Different approaches to development and system modifications (vendor-provided, self managed, hybrid)

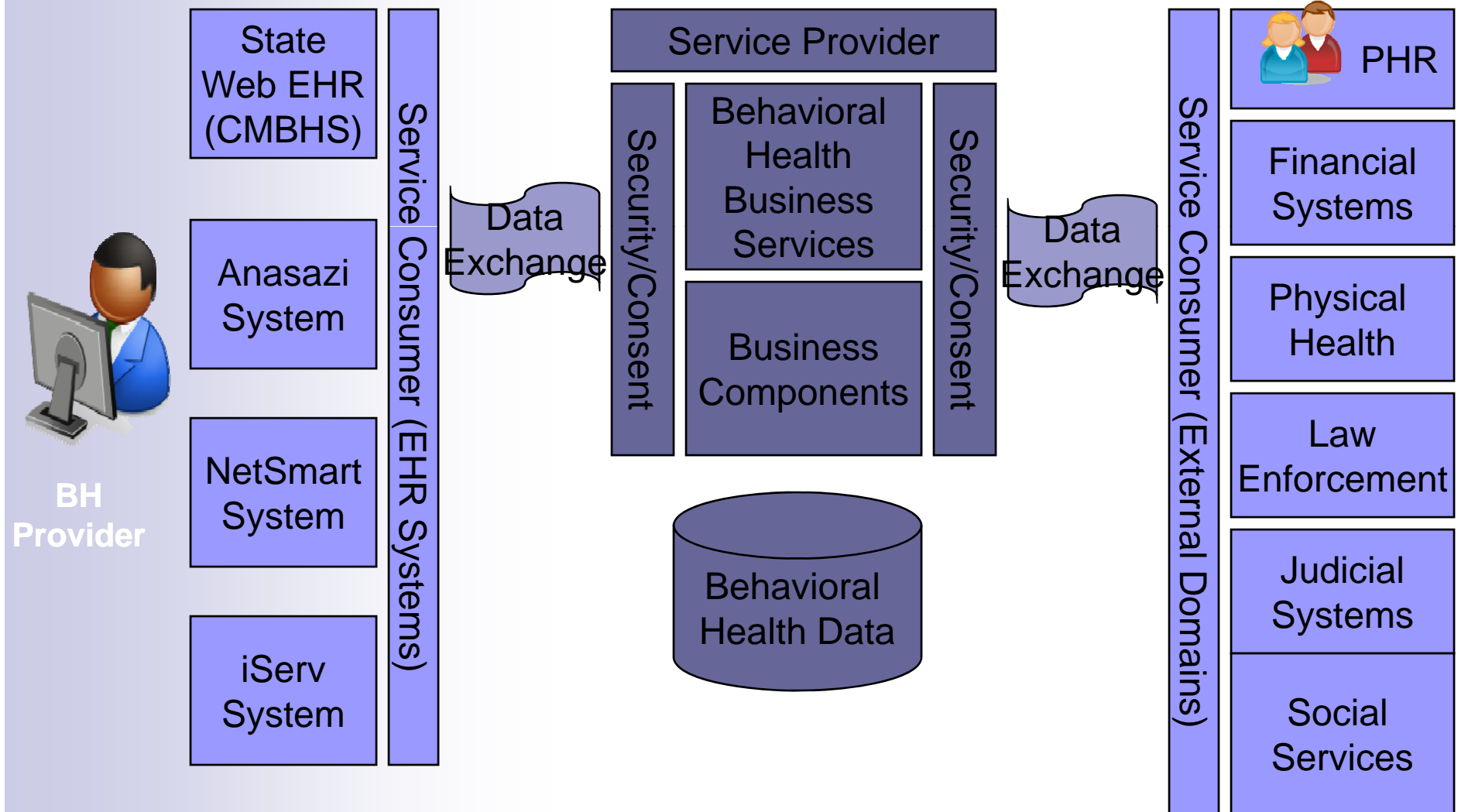
Data Exchange with Local Systems



Data Exchange with Local Systems



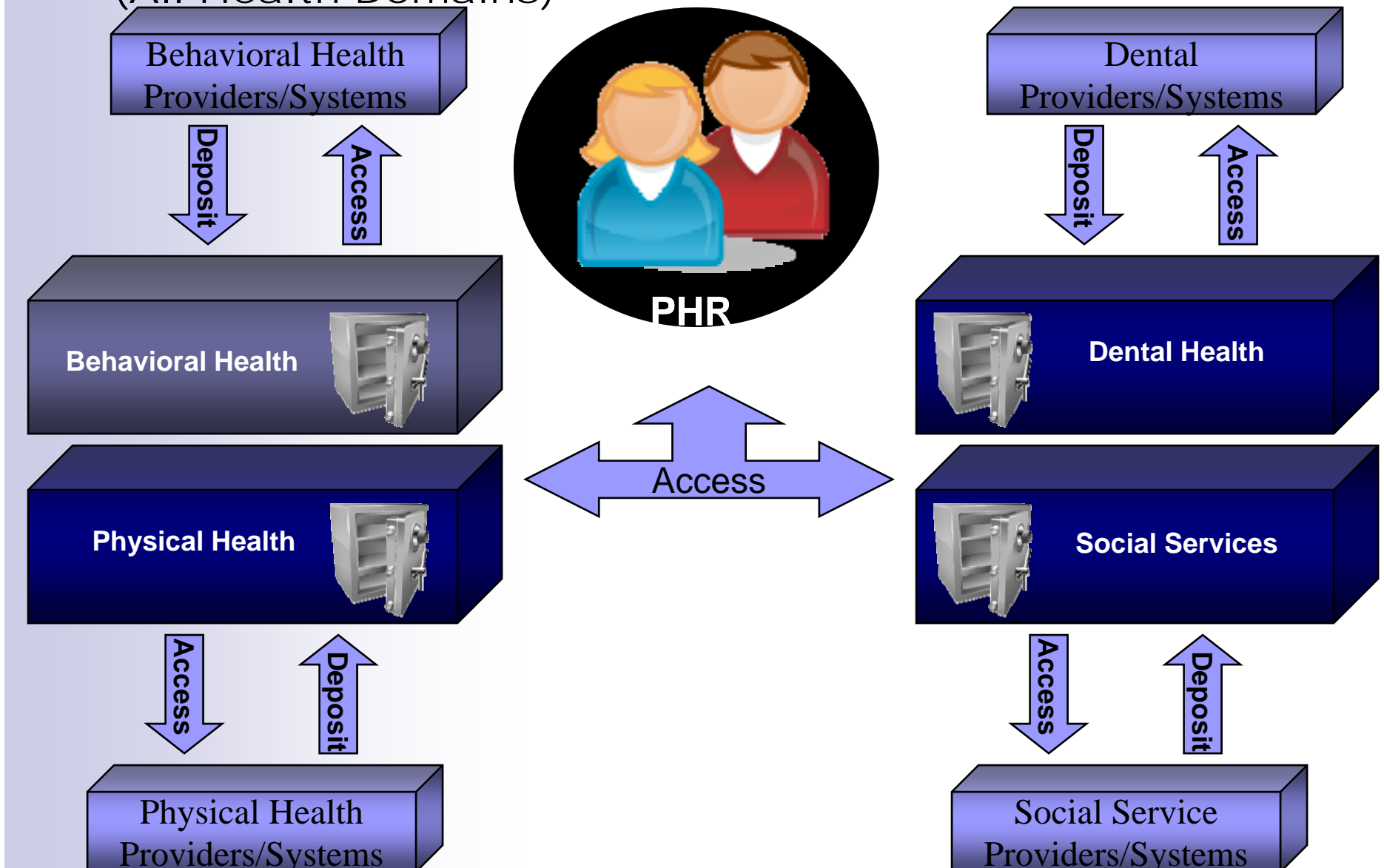
The Continuum of BH Data Exchange





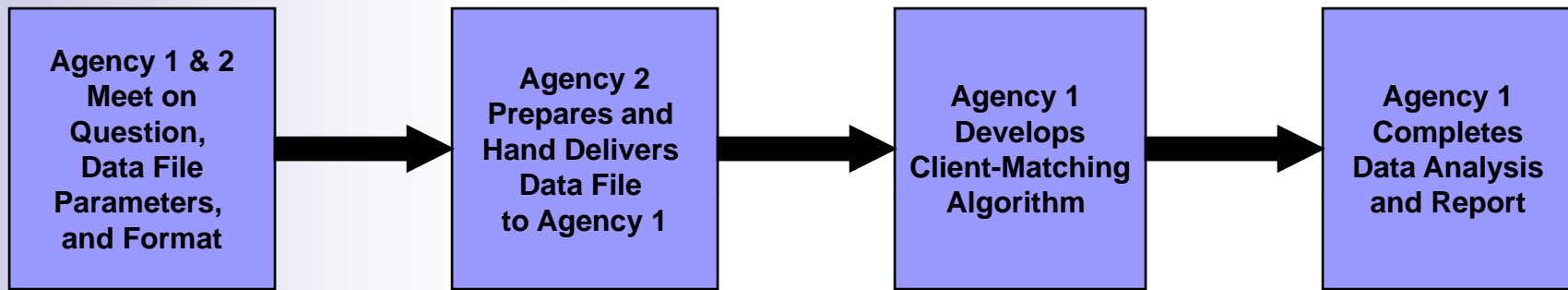
Department of State Health Services

Electronic Health Records System (All Health Domains)

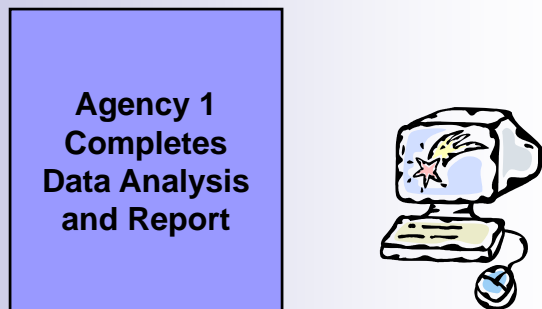


Integration Means Greater Efficiency

NOW



FUTURE



SB 839 Data Exchange

- Focus on delivering real-time information about mental health treatment services to Texas' criminal justice system
- MOA for continuity of care and service program for offenders with mental impairments in the criminal justice system. Partners include TDCJ, DSHS, DPS, MHMR Centers, and the directors of community supervision and corrections departments.
- Application of data exchange
 - ☐ Jail diversion
 - ☐ Consumer/officer safety
- Issues
 - ☐ Segmenting mental health and substance abuse
 - ☐ Consumer-established advance directives

